

PLAN - FOOTPATH NEAR PROPERTY BOUNDARY

MINIMUM CLEARANCES	
BETWEEN CROSSOVERS	7.0m AT KERB
DRAINAGE PITS	0.75m
TRAFFIC MANAGEMENT DEVICES	1.0m
UTILITY SERVICE ASSETS	1.0m
STREET LIGHT	2.0m
INTERSECTIONS	9.0m FROM INTERSECTING KERB LINES
PRAM CROSSINGS	2.0m
TREES	3.0m
FIRE HYDRANT	1.5m
LEGAL POINT OF DISCHARGE	1.0m

GENERAL NOTES:

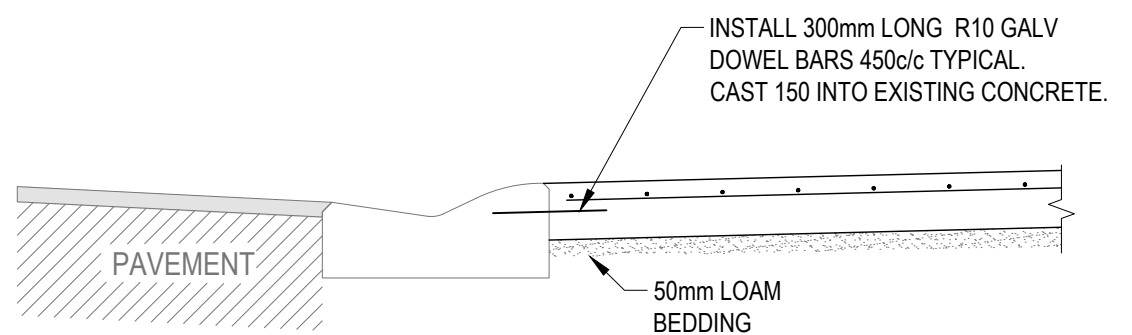
1. AN INSPECTION BY COUNCIL REPRESENTATIVES IS REQUIRED PRIOR TO PLACEMENT OF CONCRETE. INCLUDING PAYMENT OF INSPECTION FEE BY TAKING OUT A ROAD OPENING PERMIT WITH COUNCIL.
2. ABSOLUTE MAXIMUM RELATIVE GRADE CHANGE TO BE 16.9% BETWEEN THE ROAD PAVEMENT & THE DRIVEWAY.
3. MINIMUM CONCRETE COMPRESSIVE STRENGTH 25MPa.
4. IF EXISTING FOOTPATH IS LESS THAN DRIVEWAY THICKNESS, THE PATH SHALL BE REMOVED AND THICKENED TO MATCH.
5. SAW CUTS TO BE 4mm WIDE x DEPTH/4 MADE AS SOON AS THE SLAB CAN BE ACCESSED AND AFTER THE FINISHER'S FINAL PASS. CUTS SHALL BE CLEAN, STRAIGHT & SHOW NO VISIBLE CHIPPING TO EDGES.
6. THE BEDDING SHOULD BE DAMPENED PRIOR TO PLACEMENT OF THE CONCRETE. NOTE THIS IS NOT REQUIRED IF A MEMBRANE IS USED.

DOMESTIC DRIVEWAY

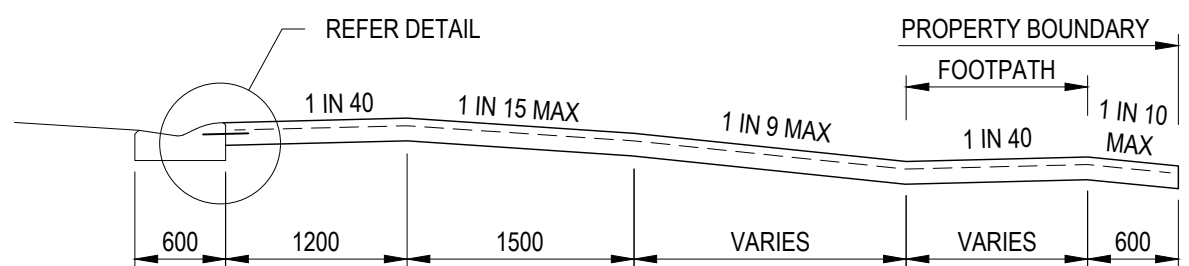
SINGLE DRIVEWAY: MAXIMUM WIDTH 6.0m
125mm THICK CONCRETE SLAB WITH ONE LAYER SL72 MESH
50mm COVER FROM TOP SURFACE OF SLAB. 65 BAR CHAIRS

INDUSTRIAL DRIVEWAY

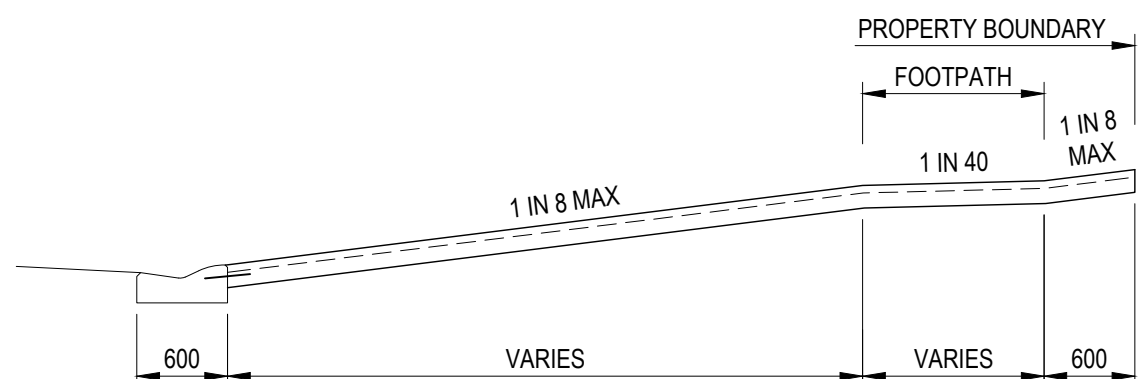
SINGLE DRIVEWAY: MINIMUM WIDTH 6.0m
150mm THICK CONCRETE SLAB WITH TWO LAYERS OF SL82 MESH
30 COVER FROM TOP & BOTTOM SURFACE OF SLAB. 110 & 40 BAR CHAIRS



KERB CONNECTION DETAIL



TYPICAL SECTION - KERB HIGHER THAN FOOTPATH



TYPICAL SECTION - KERB LOWER THAN FOOTPATH



Mildura Rural City Council

108 - 116 Madden Avenue Mildura, Vic. 3500
Ph: (03) 5018 8100

DRIVEWAY DETAILS / FOOTPATH AT PROPERTY BOUNDARY, MOUNTABLE KERB & CHANNEL

REVISION: 1

SHEET: A3

SCALE: NTS

DATE: 22/10/22

APPROVED: J. JEYAKANTHAN

DRAWING No: **MSD-311**