

# USB Floppy Disk Drive

*User's Guide*

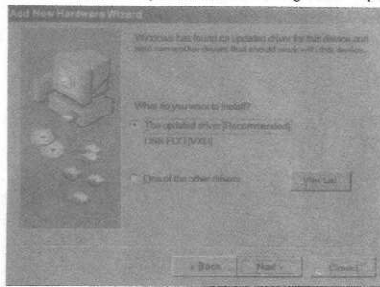
## Contents

About the USB Portable Diskette Drive . . . . .	v
Checking the shipping items in the package . . . . .	v
Using the USB Portable Diskette Drive . . . . .	v
Operating systems supported . . . . .	v
Installation and user's guide . . . . .	1-1
Installing device drivers in Windows 2000 and Windows Me . . . . .	1-1
Installing device drivers in windows 98 . . . . .	1-1

iv USB Portable Diskette Drive User's Guide

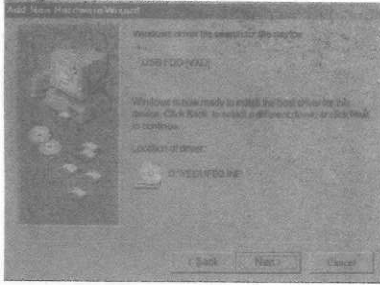
vi USB Portable Diskette Drive User's Guide

6. Click **Next** and then repeat step 2 and 3. The following window opens.



- Select **The updated driver (Recommended)**.

7. Click **Next**. The following window opens.



- Confirm the location of the device driver. If the location of the device driver is not X:\VEDUFD2.INF where X is the drive letter of your CD-ROM drive, click **Back** and return to step 6.

8. Click **Next** to install the device driver. Follow the instructions on the screen.

## Installation and user's guide

This section provides instruction on how to install the device drivers for Windows 2000, Windows Me and Windows 98.

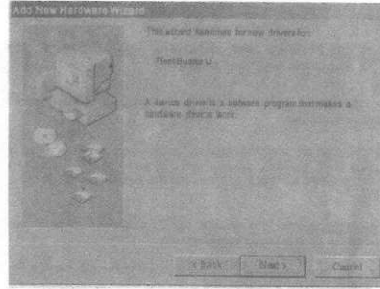
### Installing device drivers in Windows 2000 and Windows Me

To install the device drivers in Windows 2000 and Windows Me, simply insert the USB cable into the USB port and the operating system will recognize the device.

### Installing device drivers in Windows 98

To install the device driver for Windows 98, follow these instructions:

1. Connect the USB diskette drive to the USB connector on your ThinkPad computer. The Add New Hardware Wizard window opens.




---

## About the USB Portable Diskette Drive

This section contains information about the package contents, using the USB Portable Diskette Drive, and the operating systems it supports.

---


## Checking the shipping items in the package

Match the items in this list with the items in the  USB Portable Diskette Drive package. If any item is missing or damaged, please contact your place of purchase.

- USB portable Diskette Drive
- User's guide (this book)

---

## Using the USB Portable Diskette Drive

The  USB Portable Diskette Drive (hereafter called the USB diskette drive) is for use with all models of computers that have a USB connector.

If you are not sure where the USB connector on your computer is, refer to the user's manual that comes with your computer.

To use the USB diskette drive, you will need to have the device driver for it installed on your computer.

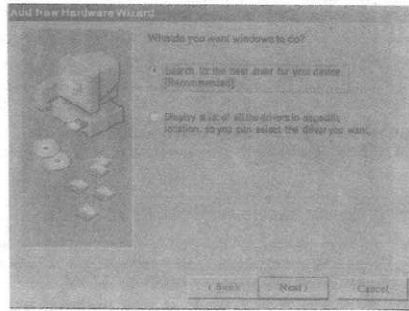
**Note:** When you set up the USB diskette drive successfully, a drive letter is assigned to it. Unlike a general diskette drive, it is not always drive A. The drive letter assigned depends on the configuration of the computer you use.

If you are not sure whether this diskette can be connected to your computer, contact your dealer or marketing representative.

## Operating systems supported

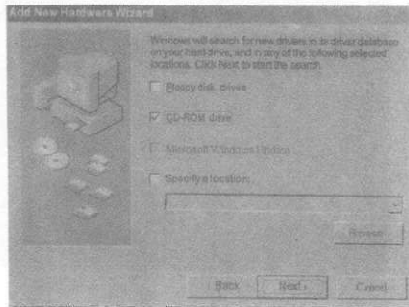
The USB diskette drive can be used with any of the following operating systems: Microsoft Windows 2000 Professional, Microsoft Windows Millennium Edition (Me), and Microsoft Windows 98.

2. Click **Next**. The following window opens.



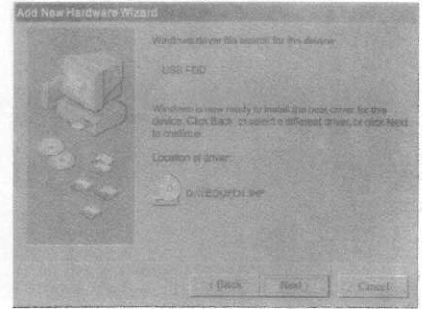
Select **Search for the best driver for your device. (Recommended)**.

3. Click **Next**. The following window opens.



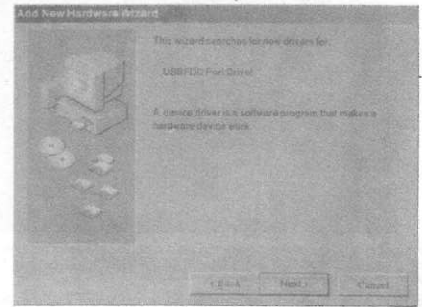
Place a check mark in the **CD-ROM drive** check box.

4. Click **Next**. The following window opens.



Confirm the location of the device driver. If the location of the device driver is not X:\YEDUFD1.INF where X is the drive letter of your CD-ROM drive, click **Back** and return to step 2.

5. Click **Next** to install the device driver. When the device driver installation completes, click **Finish**. The **Add New Hardware Wizard** window opens.



---

## About the USB Portable Diskette Drive

This section contains information about the package contents, using the USB Portable Diskette Drive, and the operating systems it supports.

---

## Checking the shipping items in the package

Match the items in this list with the items in the ~~USB~~ USB Portable Diskette Drive package. If any item is missing or damaged, please contact your place of purchase.

- USB portable Diskette Drive
- User's guide (this book)

---

## Using the USB Portable Diskette Drive

The ~~USB~~ USB Portable Diskette Drive (hereafter called the USB diskette drive) is for use with all models of computers that have a USB connector.

If you are not sure where the USB connector on your computer is, refer to the user's manual that comes with your computer.

To use the USB diskette drive, you will need to have the device driver for it installed on your computer.

**Note:** When you set up the USB diskette drive successfully, a drive letter is assigned to it. Unlike a general diskette drive, it is not always drive A. The drive letter assigned depends on the configuration of the computer you use.

If you are not sure whether this diskette can be connected to your computer, contact your dealer or marketing representative.

## Operating systems supported

The USB diskette drive can be used with any of the following operating systems: Microsoft Windows 2000 Professional, Microsoft Windows Millennium Edition (Me), and Microsoft Windows 98.