

# Community Matters

ISSUE 48 | September 2021

## A place to play

Our Playalong Early Learning Centre offers a safe space for local children to learn and develop through play. Claire Littore is among the dedicated team heading up the service. See page 2 for more.



Like us on Facebook  
[/milduracouncil](#)



Follow us on Twitter  
[@milduracouncil](#)



Mildura Rural City Council



## Meet our inspirational early childhood Educators

Mildura Rural City Council's Playalong Early Learning Centre boasts an incredibly dedicated team of early childhood Educators, whose goal is to provide quality care to children aged six weeks to 12 years.

Children learn through discovery, play and adventure, with the team at Playalong providing a safe place for local kids under their care to do just that!

Claire Littore, pictured, is part of this passionate team of Educators, and has worked at Playalong for the past six years.

Claire has a strong commitment to supporting children's development, and is the Centre's Educational Leader.

Through this role, she helps provide opportunities for children to learn, develop and flourish.

It's a role that has also provided Claire with the inspiration to further her learning and career by studying a Bachelor of Early Childhood Education.

Council is supporting Claire in her goals to further her education and skill-set – support which has been invaluable according to Claire.

"There is something special about watching a child learn and grow through exploration, curiosity and wonder of the world," Claire said.

"Within my role as an Educator I implement the Early Years Framework, and work towards exceeding in the National Quality Standards.

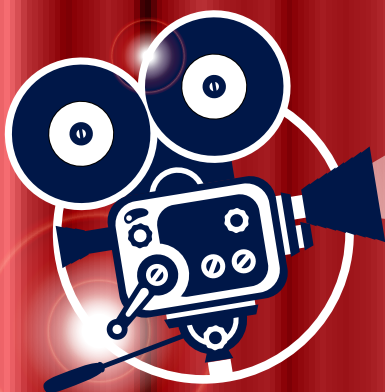
"Through this we provide an education and care facility within the community that continues to be a happy and safe place for children to attend."

There are currently multiple opportunities available for enthusiastic, passionate and creative people to join the Playalong team as Casual Child Care Educators.

It's an opportunity that Claire is encouraging people to strongly consider.

"The role is extremely rewarding, and the support you receive at Mildura Rural City Council is amazing, it really is a fantastic opportunity," she said.

For more information contact Playalong on 03 5018 8291.



# SHOW US YOUR SHORTS FILM COMPETITION

**ENTRY IS FREE FOR ALL SECONDARY STUDENTS**

Visit [mildura.vic.gov.au/FilmComp](http://mildura.vic.gov.au/FilmComp) for all the details.

Entries must be submitted before 5pm on Friday 1 October 2021.





Concept plans illustrate the transformation the Powerhouse precinct is set to undergo.

## Latest Powerhouse precinct plans on show

The exciting Powerhouse precinct redevelopment on Mildura's riverfront is taking shape following release of the latest designs for the project.

The plans highlight flexible indoor and outdoor event spaces, transformation

of the former Powerhouse basement space into a new purpose-built venue, and an events kitchen.

Other features include a large outdoor shade structure, visitor information and inspiration spaces, and references to the precinct's unique place in Mildura's history.

The entire precinct will sit within new landscaping, matching the rest of the redeveloped riverfront area.

Release of the latest plans follows a comprehensive community consultation process to ensure the new-look precinct reflects what

residents and businesses would like to see in what is already a popular area for locals and visitors alike.

To view the plans visit [mildura.vic.gov.au/Powerhouse](http://mildura.vic.gov.au/Powerhouse)

The Powerhouse precinct redevelopment has received funding support from the Victorian Government's Crisis Committee of Cabinet Infrastructure Fund, Regional Infrastructure Fund and Sustainability Victoria. The Australian Government has also supported the project through the Murray Darling Basin Economic Development Program.

## White Ribbon Workplace accreditation

Mildura Rural City Council is reinforcing its commitment to stop violence against women by starting the White Ribbon Workplace accreditation process for a third time.

Council was accredited in 2016, making it the first and largest organisation in Sunraysia, and was reaccredited again in 2019.

As an accredited workplace Council commits to continuing and introducing training and awareness programs throughout the organisation to educate all staff on family violence and the role they can play to prevent it.

It also commits the organisation to achieving similar goals in the broader community through events like the annual White Ribbon Walk.

While it's still to be determined what form the event will take this year due to uncertainty around COVID-19 restrictions, there are plans for an event of some kind. Studies show that since the pandemic there has been a significant increase in demand for family violence services, and the severity of family violence incidents.

For more information about White Ribbon visit [whiteribbon.org.au](http://whiteribbon.org.au)

If you or someone you know is experiencing family violence call 1800RESPECT on 1800 737 732, or if you are in immediate danger call 000.





Community group representatives, like Red Cliffs Kennel Club vice president Desley Reid-Orr, are hitting the streets in line with COVID-19 health directions to deliver new compostable bags.

## Compostable bag rollout

More than 70 local community, sporting and not-for-profit groups have made a start on delivering the second rollout of compostable bags for use in residents' green bins.

Seventy-six groups are delivering the bags to more than 26,000 addresses throughout the region, earning \$2 for each roll of bags they deliver.

Groups taking part in the rollout include Irymple Girl Guides, Sunraysia Carers Hub, Jeanie Kitty Crib, Mildura Theatre Company and Mildura Wanderers Hockey Club.

In the case of Jeanie Kitty Crib, funds raised through the deliveries will be used to cover veterinary costs associated with rehousing cats, including de-sexing, vaccinations and microchipping, in line with responsible pet ownership.

Compostable bags will be delivered to all residents with a kerbside bin service throughout September.

Deliveries will be interrupted at times during COVID-19 lockdowns and restrictions, which may mean some deliveries may not take place until after September.

Businesses seeking additional compostable bags can contact Mildura Rural City Council on 03 5018 8100.

## Major facelift for Lake Cullulleraine foreshore

The popular Lake Cullulleraine foreshore at Johansen Memorial Recreation Reserve is set for a major redevelopment.

Concept designs were recently completed, revealing plans for new paths, lighting, seating and picnic benches, upgrades to the existing rotunda and a new barbecue area. Other features include a nature-based play space including swings, slides, climbing nets/ropes, rocks, timber and tyres. As part of the plans the existing rotunda roof will be raised, making room to install tourist and history signage.

Millewa residents have worked closely with Mildura Rural City Council on the designs, ensuring they reflect the local community's vision and priorities for the area.

The new foreshore area, which is already a popular tourist destination, will help boost the local economy, including during construction through opportunities for local contractors.

The \$195,000 project is funded through the Australian Government's Drought Communities Program and is expected to get underway later this year.





## A little kindness can go a long way

We've all been impacted by the COVID-19 pandemic in one way or another.

Here are some simple ways we can all share a little kindness and support our community.

Research shows that acts of kindness can make us feel better and improve our health. Show kindness by calling a friend or loved one for a chat, reaching out to someone who might be doing it tough, smiling (even if you're wearing a mask), being patient or delivering a home cooked meal.

*be kind*  
TO OTHERS

As well as shopping, dining and accessing services locally, you can be kind to business by: sharing stories of great local service on social media, recommending businesses to friends, family and colleagues, purchasing a voucher to use at a later date, or giving a business a five star online review.

*be kind*  
TO BUSINESS

There are some simple things you can do to help cope during times of change. Maintaining a regular routine, eating a healthy and balanced diet, gentle exercise, doing things you enjoy like reading, cooking or playing a musical instrument, keeping in touch with friends and family and getting enough rest are all important.

*be kind*  
TO YOURSELF



*be kind*

[mildura.vic.gov.au/BeKind](http://mildura.vic.gov.au/BeKind)

## Mental health and wellbeing support

Feeling worried, fearful, anxious or uncertain are often normal responses to stressful situations like a pandemic and will usually get better over time. But sometimes negative feelings can get a bit too much or go on for longer than they should.

Are you or someone close to you:

- Feeling overwhelmed, sad, moody or tired?
- Worrying about the safety of yourself or others?
- Having vivid or distressing dreams?
- Being unusually irritable or angry and/or restless and fidgety?
- Working too much or too little?

If these signs or symptoms go on for more than two weeks or are impacting your day-to-day life it is worth seeking professional help.

A full list of local, telephone and online mental health support services is available at [mildura.vic.gov.au/mentalhealth](http://mildura.vic.gov.au/mentalhealth)

# NAIDOC Corroboree set for November spectacular

Local artists, food providers and performers are invited to take part in our region's largest celebration of the history, culture and achievements of Aboriginal and Torres Strait Islander peoples - Mildura's annual NAIDOC Corroboree.

Normally held as part of NAIDOC Week in July, the 2021 Corroboree will take place on 13 November at Nowingi Place subject to COVID-19 restrictions.

The shift in date will also allow attendees to enjoy Mildura's warm spring weather.

Mildura Rural City Council, in partnership with its Aboriginal Action Committee, is calling for groups and individuals to come forward and be part of the 2021 Corroboree.

This could include local Aboriginal artists and performers, and residents to conduct cultural workshops and stalls, as well as food providers and other forms of entertainment.

Groups or individuals wishing to be part of this year's event are asked to complete a simple application form online at [mildura.vic.gov.au/corroboree](http://mildura.vic.gov.au/corroboree)

Alternatively, hard copies or more information is available by contacting Council's Diversity and Inclusion Officer Claire Galvin at [claire.galvin@mildura.vic.gov.au](mailto:claire.galvin@mildura.vic.gov.au) or Social and Community Planning Officer Kerren Miles at [kerren.miles@mildura.vic.gov.au](mailto:kerren.miles@mildura.vic.gov.au), or by phoning 03 5018 8100.



## Creating pathways for carers to reconnect

People who are carers for their loved ones can take time out and connect with others following the introduction of Pathways for Carers.

Pathways for Carers offers monthly guided walks along the Mildura riverfront, providing people with a chance to get out and take a break from their normal responsibilities.

The monthly walks include complimentary morning tea and information sessions with local service providers. They also allow time for carers to discuss their own situations with each other, ask questions about services, and find recommendations they may want to access with other carers.



Pathways for Carers participants enjoy their monthly walk along the riverfront.

Alison Palmer is the main carer for her mother and is among those to sign up to the program.

"Mum has glaucoma and cataracts, which has left her with very limited vision, and she's also reliant on a walker and has fallen a few times, so I help her with groceries, scripts, and other things that maybe she can't quite do anymore," Alison said.

"I also need to balance caring for Mum with looking after myself, and

working five days a week, which is a balancing act.

"Pathways for Carers is making such a difference. I find the social aspect really important for my own well-being and getting me out of the house and talking to people."

A joint project between Mildura Rural City Council, Interchange Outer East and the Victorian Government, people can join by contacting Council on 03 5018 8100.



Photo courtesy of Ultimate Building Solutions.

# We're ready to play at Mildura Sporting Precinct

After more than 20 years in the making, the Mildura Sporting Precinct is finally open for business.

Construction of the precinct's \$34.298 million first stage wrapped up in late July. The facility will open to the public in line with COVID-19 health directions.

Stage 1 of the build has delivered:

- A two-storey stadium. The ground floor comprising six sports courts, change rooms, foyer, reception, administration offices, public amenities, storage, spectator seating and a café. The second floor housing two function rooms, a social club room, public amenities and storage
- An AFL-standard oval with a turf cricket wicket and light towers (up to 500 lux capacity)
- A standalone pavilion featuring coach and timekeepers box, change rooms for umpires and players, public amenity, storage for outdoor sports and a canteen
- Other external amenities, including sealed car parking, drainage, pathways and landscaping
- Four outdoor netball courts will also soon be added to the mix.

User groups, including Sunraysia Volleyball Inc., Mildura Basketball Association, Mildura Netball Association and Mildura Badminton Association will begin moving into their new home soon.

Sunraysia Volleyball Inc. president Andrew Zrna said the complex would not only accommodate the sport's growing numbers locally, but help attract state and national events.

"This facility puts us in a position to bid for, and host, regional, state and national tournaments," he said.

Mildura Badminton Association members are also excited to call the precinct home, according to vice president Augustine Albert.

"We previously had access to four courts – so we were limited in how many games we could play each competition night," he said.

"This facility provides us with potentially eight courts, and will allow us to attract regional, state, and national events, and build competitions like our tri-state Mad Vets tournament. It also provides us with an opportunity to run and promote a regular junior program. So we're very excited."

Bookings are now being taken for competitions and functions at the precinct, and can be made by calling 03 5055 5101 or emailing [helpdesk\\_msp@mildura.vic.gov.au](mailto:helpdesk_msp@mildura.vic.gov.au)

Funding Partner	Amount
The Australian Government (Building Better Regions Fund Rounds Two and Three)	\$17.5 million
The Victorian State Government	\$3.750 million
Mildura Rural City Council	\$12.403 million
Community Contributions (Mildura Netball Association, South Mildura Sporting Club, Sunraysia Football Netball League and Sunraysia Volleyball Inc.)	\$370,368
Cricket Australia/Cricket Victoria	\$275,000
<b>Total</b>	<b>\$34.298 million</b>

# Big plans to reactivate Rio Vista Park

Mildura's Rio Vista Park is about to be transformed into a thriving, more active outdoor community space.

Located between the Rio Vista Off Leash Dog Park and the Lock 11 lawns, the park is set to receive a broad range of works to make it safer and more enjoyable for the community to use.

Plans for the park include:

- new public toilets
- reactive public lighting
- more lighting to improve security and safety
- CCTV cameras
- new tree plantings
- linkages to the nearby Off Leash Dog Park

Improving community safety has been a major driver behind many of the new features, including demolishing the

existing 40-year-old toilet block and replacing it with new, safer and more modern facilities.

As part of this stage of the work community will be invited to help come up with designs and artwork for the sides of the toilet block, which will help improve the overall look.

Another visual feature will be reactive coloured lighting, which will brighten

and dim and change colours as people move through certain areas of the park.

The Rio Vista Park upgrades will be made possible through \$268,341 from the Victorian Government's Community Crime Prevention Program and are expected to be completed early next year.



## Libraries new and improved website!

Accessing Mildura Rural City Council Libraries online services has become a lot easier following a revamp of the popular services' website.

The new-look website makes it simple for locals and visitors to find the books and resources they want, learn more about upcoming events and programs and become a library member.

- Interested in becoming a member?
- Want to learn more about your local library?
- Interested in signing up for a book club?

Visit [mildura.vic.gov.au/libraries](http://mildura.vic.gov.au/libraries) to find out more.



If you need an interpreter we can help. To access an interpreter, call TIS National on 131 450 and ask them to call Mildura Rural City Council on 03 5018 8100. You can also ask for an interpreter when you use any of our services.

T 03 5018 8100

E [mrcc@mildura.vic.gov.au](mailto:mrcc@mildura.vic.gov.au)

[mildura.vic.gov.au](http://mildura.vic.gov.au)

Call or email us from 8am to 5pm weekdays.

Deakin Avenue Service Centre 76 Deakin Avenue, Mildura

Madden Avenue Service Centre 108 Madden Avenue, Mildura

Ouyen Service Centre 79 Oke Street, Ouyen

### DISCLAIMER

Every effort has been made to ensure the accuracy of information published in Community Matters. All details were correct at the time of printing.