

Feast Street Concept _ Green Dining Arbour + Shared Street

The preferred concept for Feast Street's redevelopment is a shared street design with a feature arbour and vines running along both sides of the street.

The upgraded street features arbours that replace the existing outdoor dining structures, creating an elongated and flexible space for the length of the street, while also helping to enhance the outdoor dining experience.

Widened footpaths and improved accessibility help to improve pedestrian amenity, while the narrowed road carriageway and shared street allow flexibility for the street to be closed off to traffic and host large events.

On-street parking is reconfigured into a mix of parallel and 90 degree parking, with additional parking provided at nearby Seventh Street.





Feast Street Concept _ Green Dining Arbour + Shared Street



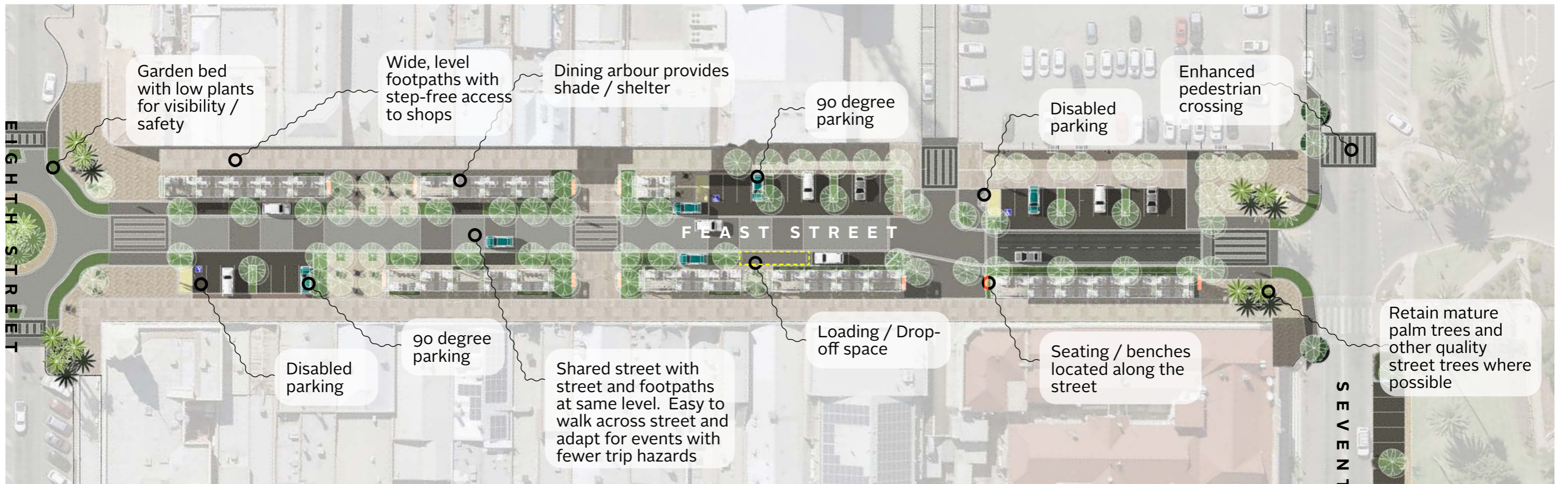
Outdoor dining under the arbour, showing vines and coloured shade cloths.



Widened and improved mid-block pedestrian crossing with shade and landscaping.



The arbour structure with generous areas for dining and congregating underneath vines and sheltered structure providing shade in summer and rain protection in winter .



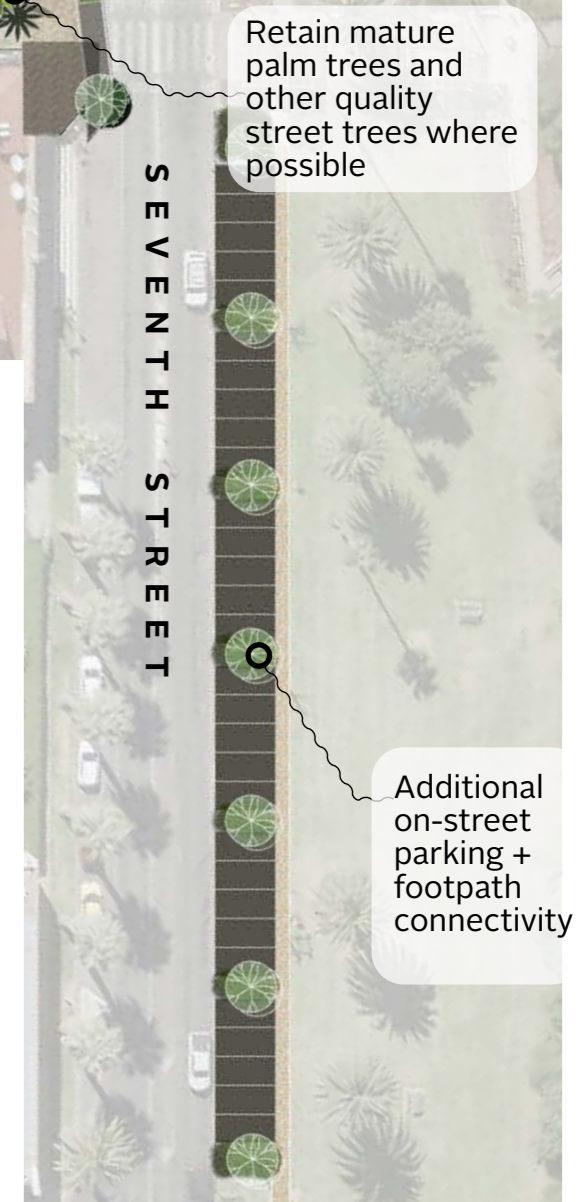
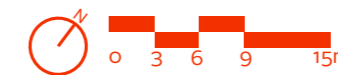
Concept Plan

Feast Street Concept _ Green Dining Arbour + Shared Street

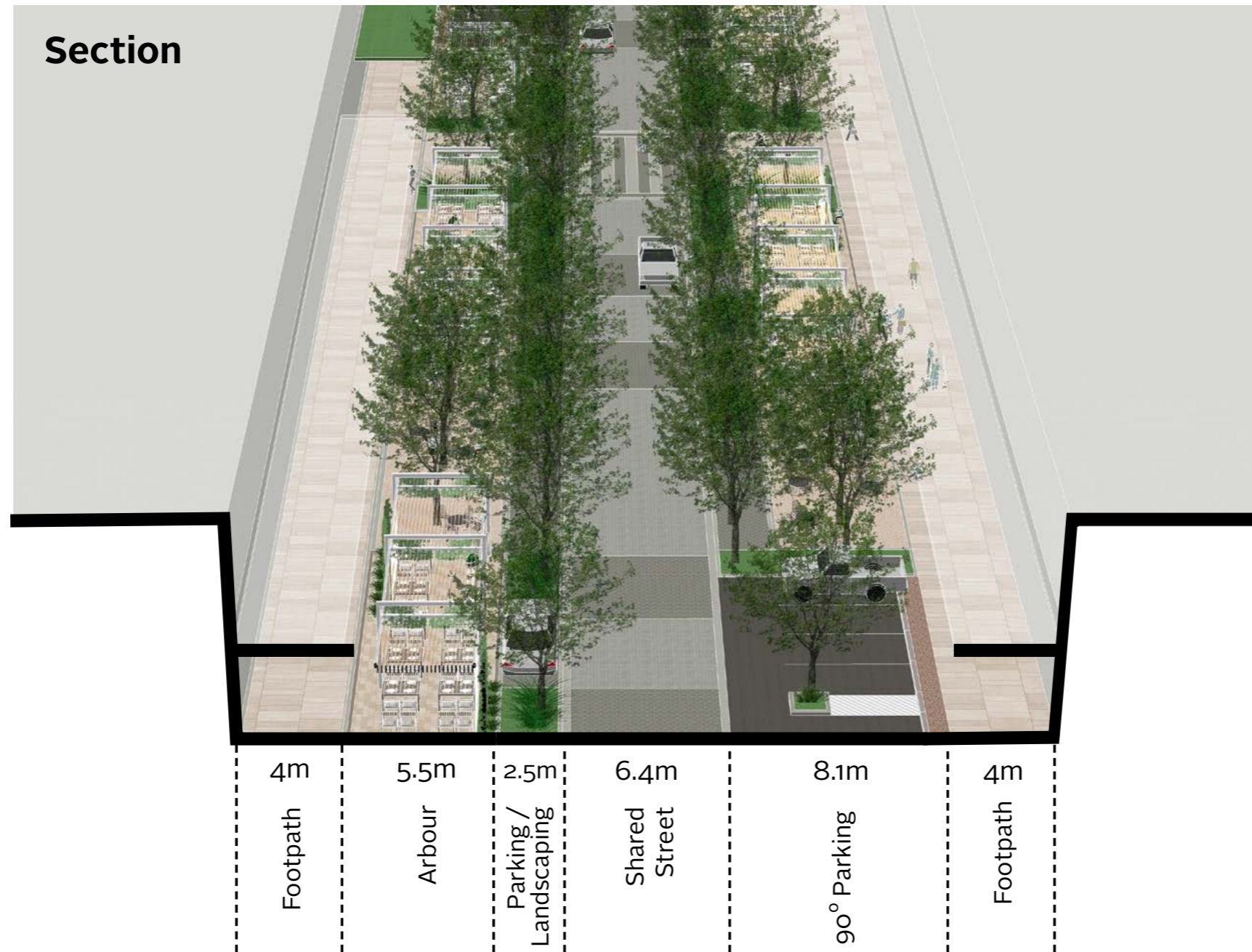
Key features of the design include:

- _ Widened footpaths with new paving treatment.
- _ Shared street with flush kerbs, slower traffic, improved pedestrian amenity and safety and flexibility for events.
- _ Connected and green arbour dining structure stretches length of the street, providing opportunities for outdoor dining, flexibility for events and shade. All-weather design for summer and winter use.
- _ Pedestrian priority street design.
- _ Large planted protuberances.
- _ Landscaped gateways at Seventh and Eighth Street.

- _ New tree planting for greener, cooler environment.
- _ Regular bench seating for rests, footpath level street crossings, and wide pram ramps to support less able and older street users.
- _ Parallel car parking, additional new angled parking on Seventh Street, disabled parking at key locations.
- _ Raised crossing on Eighth Street connecting to Langtree Mall.
- _ New pedestrian crossings on Seventh Street and Feast Street.
- _ Public art opportunities including wayfinding and storytelling sculptures, changing exhibition vitrines / light boxes, ephemeral artworks (projections).



Feast Street Concept _ Green Dining Arbour + Shared Street







Feast Street Concept _ Green Dining Arbour + Shared Street

Arbour Flexibility



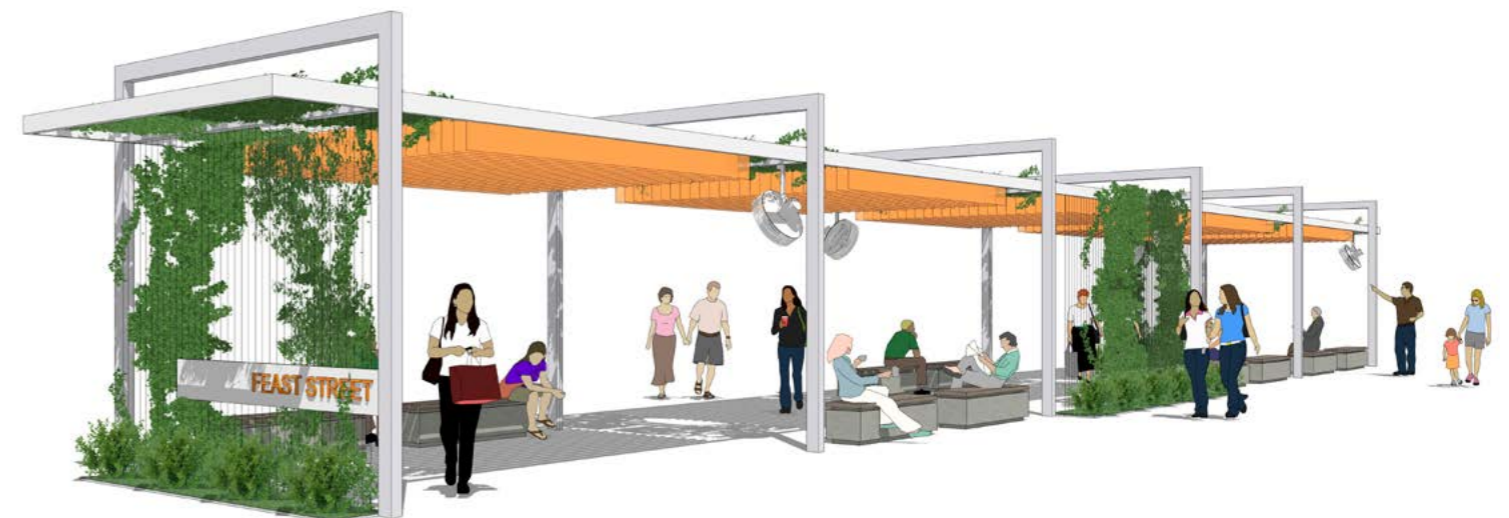
BLANK CANVAS



POP-UP MARKET OR EVENT



OUTDOOR DINING



PUBLIC REALM WITH SEATING



6. Public Realm Elements

This section lists potential elements, materials and plant species proposed in the concepts.

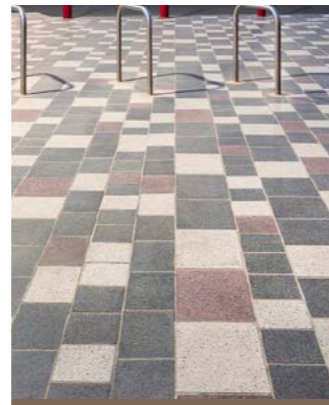
6.1 Public Realm Tool Kit

Public realm elements, surfaces + treatments

PAVING



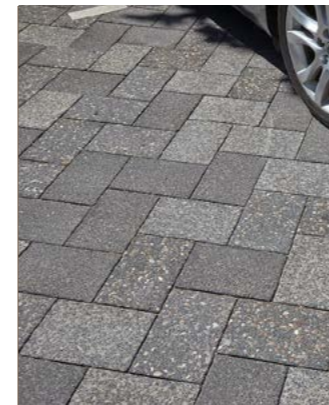
- _ Concrete paving
- _ Cream shot blast
- _ Street corners



- _ Concrete paving
- _ Dark grey shot blast + cream shot blast + red milled
- _ Under the awnings



- _ Concrete paving
- _ Silver grey shot blast
- _ Shared street



- _ Concrete Paving
- _ Silver grey shot blast + dark grey shot blast + silver grey with cream aggregate shot blast
- _ Beside the curb



- _ Exposed aggregate concrete
- _ Cream shot blast
- _ Outdoor dining space

FURNITURE



- _ Spark standard bin + cowl (120L)
- _ Zinc plated steel, powder coated



- _ Proprietary bollards
- _ Brushed stainless steel



- _ Bike rack
- _ Brushed stainless steel
- _ Standard bicycle storage in lower activity areas



- _ SAGE Automation Power Bollard
- _ Stainless steel 316, powder coated
- _ Power source in high activity / event nodes



- _ Water fountain with dog bubbler
- _ Brushed stainless steel
- _ High activity nodes



- _ Bespoke seat with back and armrest, ideal for older people
- _ Hardwood timber seat / powder coated steel + concrete base
- _ Feature seating in nodes of high activity + plazas

Public realm elements, surfaces + treatments

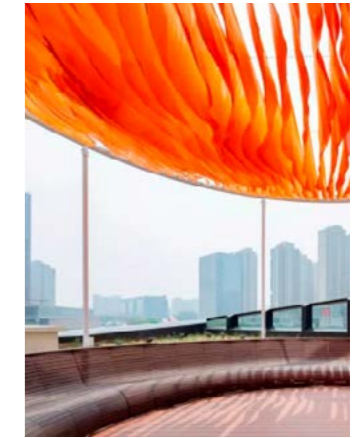
LIGHTING



SIGNAGE



ARBOUR



Design Detail
Colour + Surface Finish
Design Application

- _ Light bollard
- _ Aluminium, dark grey powder coated
- _ Bollard lighting beside outdoor dining areas

- _ Pole mounted light
- _ Aluminium, dark grey powder coated
- _ Beside Carriageway

- _ Catenary lighting
- _ Aluminium, powder coated
- _ Feature lighting in play, ceremonies nodes

- _ Steel wayfinding signage
- _ Dark grey powder coated steel
- _ Feature wayfinding in nodes

- _ Steel wayfinding signage
- _ Dark grey powder coated steel
- _ Feature wayfinding in nodes

- _ Arbour For Outdoor Dining
- _ White powder coated steel
- _ Feature wayfinding in nodes

- _ Steel wayfinding signage
- _ Dark grey powder coated steel
- _ Feature wayfinding in nodes