

Full Business Case for the Mildura Motorsports and Community Precinct

Site Masterplan

The project options identified in the Business Case include four distinct options. Option 5 is a staged option containing all the elements in Option 4 but to be developed in a stage manner over four stages:

The staged development plan shows stage 1 which incorporates stages or Project Options 1-3 as per table below.

Stage 4 of the stage development plan shows the full master plan in an instant development or staged scenario.

Project Option 1	Project Option 2	Project Option 3	Project Option 4	Project Option 5
<ul style="list-style-type: none"> • Bitumen race track • Skid pan • Pits and control tower • Office facilities • Maintenance shed • Camping facilities • Food and beverage 	Includes Project Option 1 as well as: <ul style="list-style-type: none"> • Fuel facility • Lighting • Vehicle handling area 	Includes Project Option 2 as well as: <ul style="list-style-type: none"> • Permanent and temporary seating • Garages and workshops 	Includes Project Option 3 as well as: <ul style="list-style-type: none"> • Function space • Jet ski course • Additional circuits (go karts, speedways, dirt cart, drifting) 	<ul style="list-style-type: none"> • Bitumen race track • Skid pan • Pits and control tower • Office facilities • Maintenance shed • Camping facilities • Food and beverage • Fuel facility • Lighting • Vehicle handling area • Permanent and temporary seating • Garages and workshops • Function space • Jet ski course • Additional circuits (go karts, speedways, dirt cart, drifting)

Full Master Plan

Mildura Sports and Community Precinct

2nd February, 2017

Version 22

Key

- Skid Pan
- Destination Zone (*Pits, Paddock, Tower, Administration, Medical Room, Function Centre, Product Launch Area, Garages, Fuel Store, Maintenance, CWS*)
- Track Expansion Area
- Temporary Seating
- Pits
- Tower
- Managers Quarters
- Drag Pit Provision and Camping Area
- Visitor Information
- Car Parking
- Camping
- Bitumen Racing Circuit
- Drag Strip (Existing)
- Jet Boat Water Course
- Car Speedway
- Motorcycle Speedway
- Karting Track
- Dirt Kart Circuit
- 4WD Training Course
- Primary Road
- Major Entry Wayfinder
- Zone of Cultural Heritage Significance
- Zone of Ecological Significance
 - EPBC Significance
 - Rare or Threatened
 - High Quality
- 1Km Noise Residential Buffer

NOTE: all boundaries have been inferred from analogue information (jpg. and PDF format) only as supplied by Mildura Rural Council.







Stage One of Master Plan

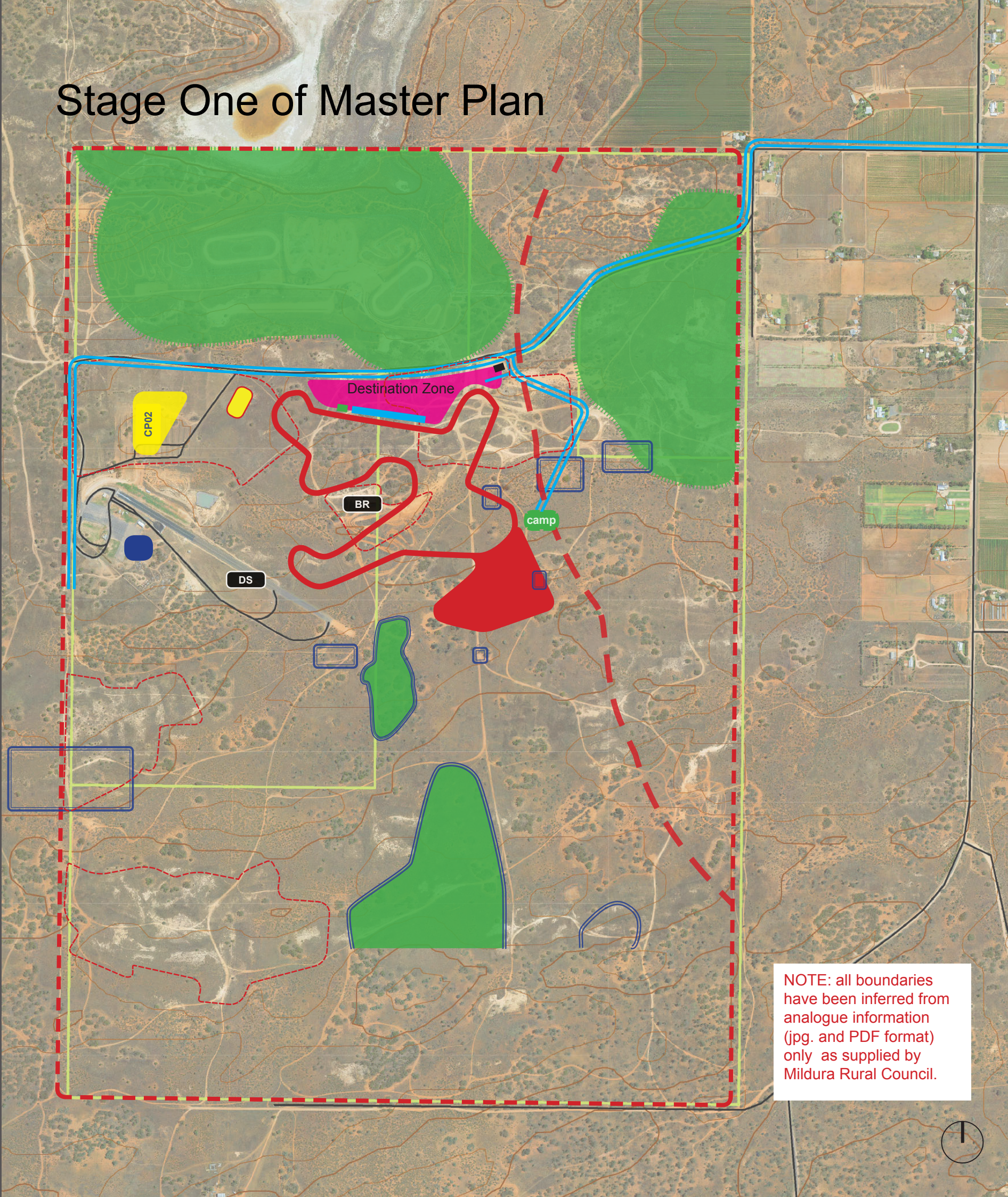
Mildura Sports and Community Precinct

2nd February, 2017

Version 22

Key

-  Skid Pan
-  Destination Zone (*Pits, Paddock, Tower, Administration, Medical Room, Function Centre, Product Launch Area, Garages, Fuel Store, Maintenance, CWS*)
-  Pits
-  Tower
-  Drag Pit Provision and Marshalling Area
-  Track expansion area
-  Motorsport parking
-  Camping
-  Bitumen Racing Circuit
-  Drag Strip (existing)
-  Primary Road
-  Zone of Cultural Heritage Significance
-  Zone of Ecological Significance
 - EPBC significance
 - Rare or threatened
 - High quality
-  1Km noise residential buffer



NOTE: all boundaries have been inferred from analogue information (jpg. and PDF format) only as supplied by Mildura Rural Council.



Racetrack and Barriers

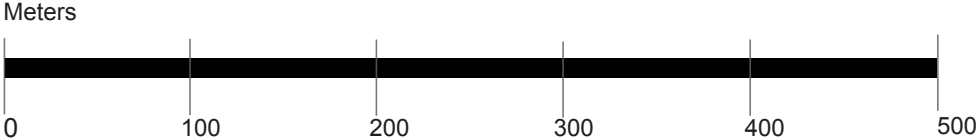
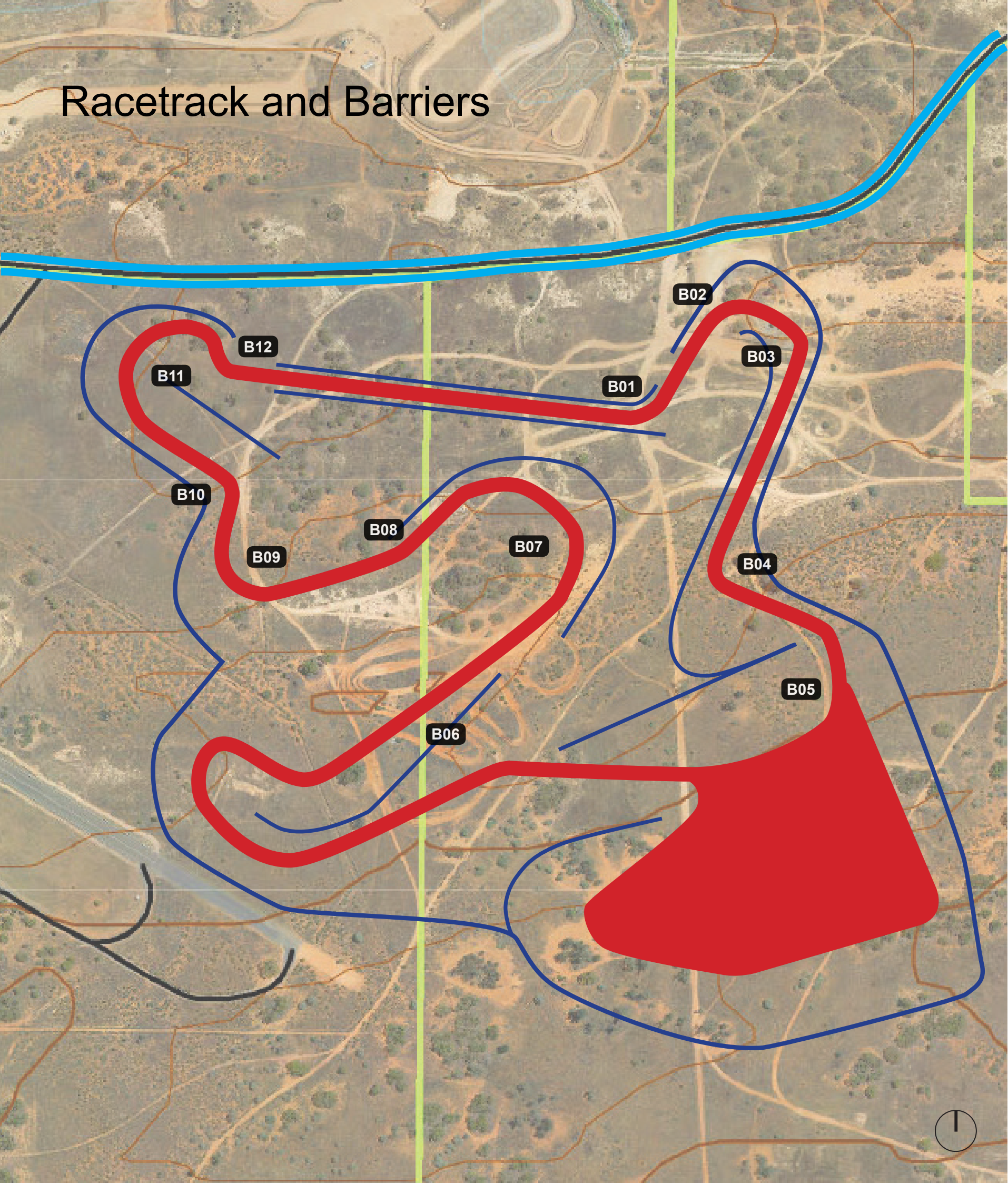
Mildura Sports and Community Precinct

2nd February, 2017

Version 22

Key

- Primary Road
- Track Expansion Area
- Barriers
- Fencing



Full Master Plan

Mildura Sports and Community Precinct

2nd February, 2017

Version 22

Key

- Skid Pan
- Destination Zone (*Pits, Paddock, Tower, Administration, Medical Room, Function Centre, Product Launch Area, Garages, Fuel Store, Maintenance, CWS*)
- Track Expansion Area
- Temporary Seating
- Pits
- Tower
- Managers Quarters
- Drag Pit Provision and Marshalling Area
- INFO Visitor Information
- CP00 Car Parking
- camp Camping
- BR Bitumen Racing Circuit
- DS Drag Strip (Existing)
- JB Jet Boat Water Course
- CS Car Speedway
- MS Motorcycle Speedway
- KT Karting Track
- DK Dirt Kart Circuit
- 4WD 4WD Training Course
- Primary Road
- Major Entry Wayfinder
- Zone of Cultural Heritage Significance
- Zone of Ecological Significance
 - EPBC Significance
 - Rare or Threatened
 - High Quality
- NVIM High Risk Vegetation
- 1Km Noise Residential Buffer

NOTE: all boundaries have been inferred from analogue information (jpg. and PDF format) only as supplied by Mildura Rural Council.

