

An aerial photograph of the Irymple community, showing a mix of residential houses, commercial buildings, a large green sports field, and a playground. The text 'IRYMPLE COMMUNITY PLAN' is overlaid in large white letters, with '2020 - 2025' below it. The background shows a suburban landscape with trees, roads, and distant industrial areas under a blue sky with clouds.

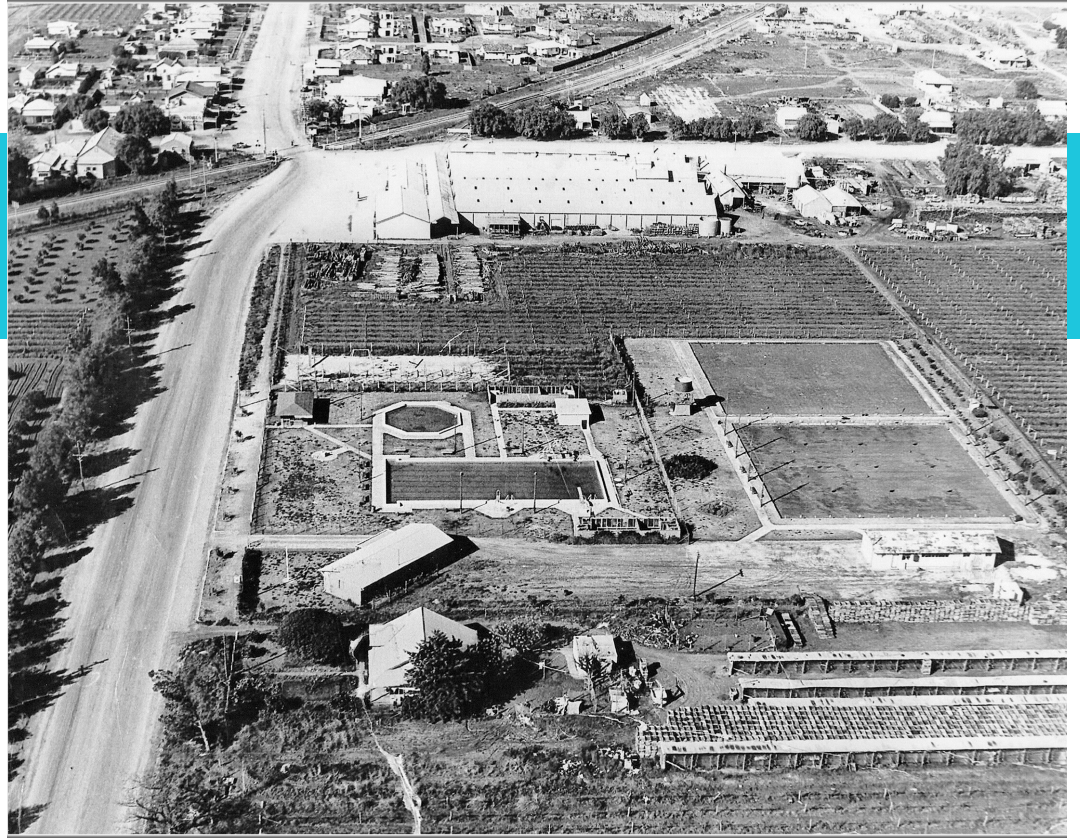
# IRYMPLE COMMUNITY PLAN

2020 - 2025



# FROM THE PAST LOOKING TO THE FUTURE

1951



2020







# WHAT IS COMMUNITY PLANNING?

Community Planning is the process whereby local people are encouraged to become actively and genuinely involved in providing feedback about their thoughts and visions for the future of their community.

Community Planning assists in identifying the direction the community wants to take to move forward, by documenting ideas and suggestions that provide guidance.

The plan is 'owned' by the community with Council available to play a facilitation role. Community Plans provide valuable input into Local, State and Federal Government planning and is a tool to support applications for funding.

## CONTENTS

What is Community Planning.....	1
About Us.....	2
Achievements to date.....	3
How we developed the plan.....	4
Purpose of the plan.....	4
Demographics.....	5
Map.....	6
What we love about Irymple.....	6
Theme 1: A social community.....	7
Theme 2: Planning for a growing town.....	7
Theme 3: Community assets.....	8
Theme 4: Strong local economy.....	8
Theme 5: Communication & connection.....	9
Acknowledgements.....	10
Stay connected.....	10
Endorsement.....	10



## ABOUT US

The development of this plan has been led by the Irymple Progress Association with the support of Mildura Rural City Council.

Irymple Progress Association has been in existence for 100 years and works with the community and on behalf of the community of Irymple. Historical documents of the Progress Association show that members lobbied on behalf of the community and organisations for improvements within the township and also endorsed candidates for the then Mildura Shire Council.

Currently the Association identifies concerns that affect community members and local organisations ie schools, businesses and service clubs, and works to implement infrastructure that is needed for the future of our town so it maintains an independent identity.

The membership of the Association is made up of those who have a generational connection with Irymple as well as the Irymple Progress Association, while others are new to the area. The Association's vision for the future of the Irymple township is a combination of innovation, community feedback and the acknowledgement of the vision of those from generations past.



# ACHIEVEMENTS TO DATE

The first Irymple Community plan was developed in 2011. The theme was Proud of who we are! Following is a selection of highlights of what has been achieved from the previous plan, demonstrating what we can achieve by working together to develop and deliver a Community Plan.

- Establishment of Lloyd Park.
- Establishment of One Hub, which led to retaining the Irymple Library and providing a continuing community space.
- Drawing to the community a Supermarket, Doctor, Chemist, Pathology Services, Butcher & Baker.
- Reinstatement of the SunAssist Car Show to Henshilwood Oval.
- Establishment of a Weekly Walking Group.
- Pool Party at Irymple Pool.
- Movie at Henshilwood Oval for the community.
- Setting up of Face Book and Web Page for the Association.
- Irymple Bus Stop mural, corner 15th Street & Koorlong Avenue.
- Involvement in community events such as Clean Up Australia Day, Neighbourhood Day, Pancake Day, annual Christmas Carols, Australia Day celebrations.
- Involvement in National Red Balloon Day to recognise firefighters locally and nationally.
- Christmas decorations at Lloyd Park and One Hub/Library.
- Ongoing involvement in improving town signage.





# HOW WE DEVELOPED THE PLAN

In 2019 the Irymple Progress Association approached Mildura Rural City Council to again partner to conduct a review of the 2011 Community Plan, and develop a new Community Plan for 2020-2025.

A community survey was held in 2019 in which over 120 individuals provided feedback on their values, challenges and vision for Irymple.

Further to this a Community Brainstorming day was held at One Hub in 2020 where we spoke to 35 people including business owners, community groups, school students and residents to further refine the content for this plan.

Feedback from community was organised into 5 key themes with suggested actions associated with each (see pages 8-10.)

# PURPOSE

Irymple wishes to have a strong identity as a community and place, through developing a unique culture which is attractive to visitors and enriching for locals.

As nearby regional city Mildura grows and the boundaries between Irymple and Mildura become closer, this brings a challenge for Irymple to maintain independence, as well as opportunities to improve our town for a growing community.

This plan is a strategic document to prioritise our goals. It is for the whole community of Irymple and open to anyone to use who wants to better this community. The aim of this plan is to bring together our community to collaborate on implementing the actions that have been identified.

Any community group can contribute to actions in this plan and use this as a tool for applying for funding. The Irymple Progress Association and Council can support this process.







# 6,874

## POPULATION

*Common ancestries include Australian 32.3%, English 27.2%, Italian 9.8%, Irish 6.8%, Scottish 6.5% Aboriginal 2%*

# 41

## MEDIAN AGE

*Children aged 0 - 14 years made up 20.6% of the population and people aged 65 years and over 16.3% of the population.*

# 1,864

## FAMILIES

*48.9% were couple families with children, 39.4% were couple families without children and 11.2% were one parent families*

# 2,662

## DWELLINGS

*77.9% were family households, 20.6% were single person households and 1.5% were group households.*

# \$1,290

## AVERAGE WEEKLY HOUSEHOLD INCOME

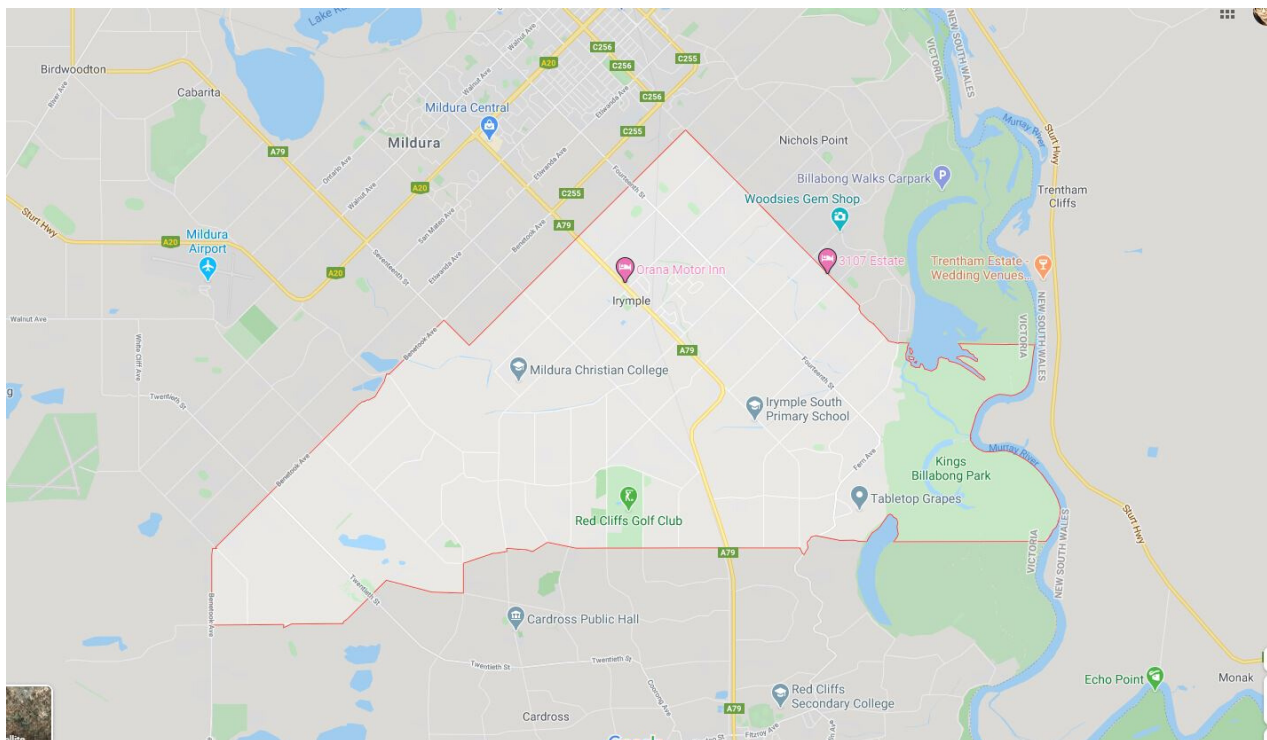
*18.7% of households had a weekly household income of less than \$650 and 10.7% more than \$3000.*

# 4.4%

## UNEMPLOYED

*Major industries of employment included grape growing, primary education, supermarket and grocery stores, hospitals and road freight transport*





# WHAT WE LOVE ABOUT IRYMPLE

Irymple offers a peaceful rural lifestyle, whilst being a self-contained town with access to a range of facilities and services.

The people are friendly, there is a sense of community due to the closeness of neighbours and friends.

We value our community facilities such as the Hotel, Senior Citizens Centre, One Hub, recreational spaces and schools.

Our proximity to Mildura is valued for access to additional facilities and services.

Irymple is a clean, attractive and green town in which we feel safe.

*Statement derived from answers to Irymple Community Plan Consultation Survey.  
Demographics from 2016 Census  
QuicksStats.*



# THEME 1:

# A SOCIAL COMMUNITY

## **Create a healthy volunteering culture, e.g:**

- Support building the capacity of our volunteers and community groups through learning opportunities
- Recognise and celebrate efforts of volunteers through awards and events

## **Bring the community together to celebrate important recognised days and holidays, e.g:**

- Celebrate Neighbourhood Day, Anzac Day, Australia Day etc
- Celebrate Christmas through activities, decorations and events

## **Build a healthy social fabric through programs and activities for everyone to enjoy, e.g:**

- Celebrate our multi-cultural community
- Support youth & children's activities
- Implement social activities & clubs for seniors
- Organise group fitness classes

# THEME 2:

# PLANNING FOR A GROWING TOWN

## **Advocate for community to be consulted in town planning to ensure a safe and accessible town, e.g:**

- Advocate for affordable housing options and appropriate residential planning
- Identify improvements required for road safety, footpaths, lighting and parking
- Identify walk and bike track improvements

## **Advocate for new/improved services as needed for a growing community, e.g:**

- Health services
- Public transport
- 24/7 ATM banking
- New eateries and retail shops
- A large fuel complex with toilets, showers, food, fuel and parking



# THEME 3:

# COMMUNITY ASSETS

**Continue to maintain and update our community assets and facilities for all to benefit, e.g:**

- One Hub
- Lloyd Park
- Sporting facilities/leisure centre
- Pool
- Green belt

**Advocate for new recreational facilities to cater for a growing community, e.g:**

- A large all abilities playground
- Skate Park
- Dog and exercise park
- Water park at the pool
- Mountain bike/pump track

**Ensure sustainable beautification of our town to foster a sense of pride, e.g:**

- Plant more trees for shade
- Beautify streets with public art
- Beautify storm water storage areas
- Plan for more open green spaces

# THEME 4:

# STRONG LOCAL ECONOMY

**Promote and support a strong local economy which serves local residents and attracts visitors, e.g:**

- Package up shopping, retail and visitor experiences and co-promote
- Create focus group for original shopping precinct to brand the area (ie; Boutique, Retro or Vintage Irymple)
- Support local growers and encourage consumption of local produce

**Support and encourage new and diverse community events for locals to enjoy as well as attract visitors, e.g:**

- Markets, live music, outdoor cinema
- Arts & cultural events
- Attract major events to Irymple



# THEME 5: COMMUNICATION & CONNECTION

**Share information across the community to keep everyone connected and informed, e.g:**

- Quarterly Irymple News
- Establish a community noticeboard
- Share updates on Irymple Progress Association facebook page
- Create a community directory

**Identify and collaborate with stakeholders to activate the Community Plan, e.g:**

- Local community groups
- Local businesses
- Local schools
- Not for profit organisations
- Mildura Rural City Council departments
- Mildura Regional Development
- State and Federal Government





## ACKNOWLEDGEMENTS

We acknowledge the First Peoples of the Millewa-Mallee, The Latji Latji, Ngintait, Nyeri Nyeri and Werigia, as the Traditional Owners and Custodians of the Country on which we live, work and play. We pay our respects to the Elders past and present of First Peoples of Millewa-Mallee and the ancient connection they hold with their Country.

Thank you to the Irymple Community, the Irymple Progress Association, Rachel Kendrigan and Geoff Burr from the Mildura Rural City Council for their help in formulating the Irymple Community Plan

## STAY CONNECTED

To keep up to date on what's happening in the Irymple community, our seasonal newsletter 'Irymple News' is available from One Hub, Irymple Post Office and in local stores.

Would you like become a member of the IPA or volunteer to help activate an idea in this plan?

Contact us at [irympoleprogress@hotmail.com](mailto:irympoleprogress@hotmail.com)

## ENDORSEMENT

The Irymple Community Plan was presented to Mildura Rural City Council and endorsed at a Council meeting held on.....

Any alterations to this plan requires a public meeting process.

It may be necessary for the Community Plan actions to be put on hold:

- as a result of emergency occurring in the district
- if exceptional opportunities or circumstances arise